



REVIEW ON THE PROGRESS OF IMPLEMENTATION OF THE MALÉ DECLARATION AT THE NATIONAL LEVEL

The Fourteenth Session of the Intergovernmental Meeting
November 2015

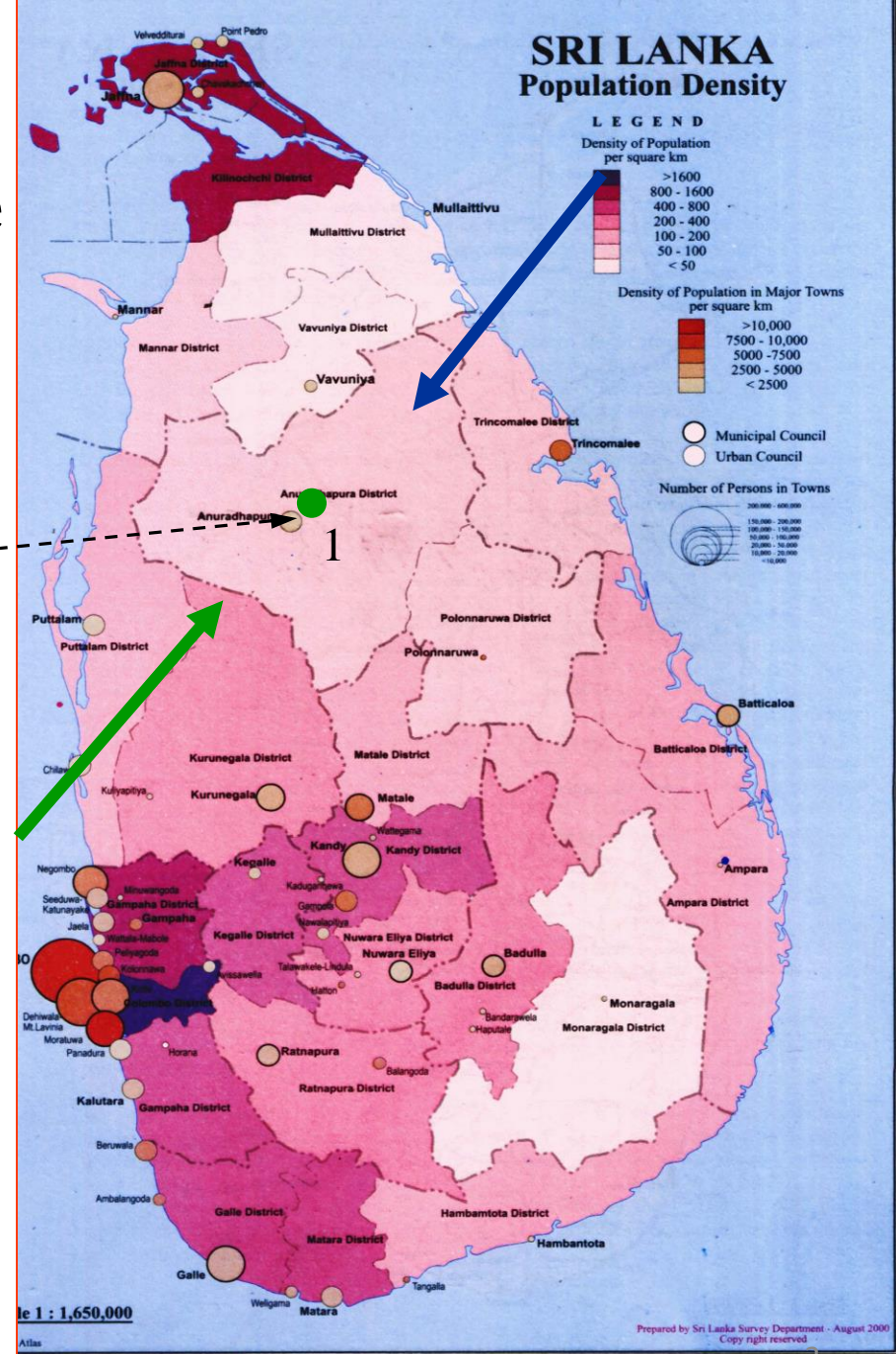
Central Environmental Authority
National Implementing Agency
Sri Lanka

Monitoring Programme

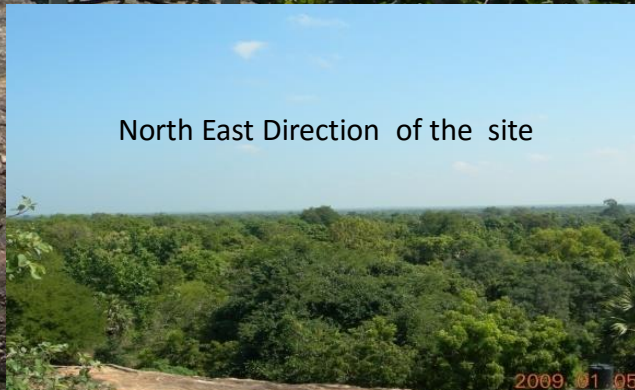
Monitoring Site at Doramadalaawa

SOUTH- WEST WIND
DIRECTION (MAY-SEP)

NORTH-EAST WIND
DIRECTION (DEC- FEB)



Doramadalawa Site



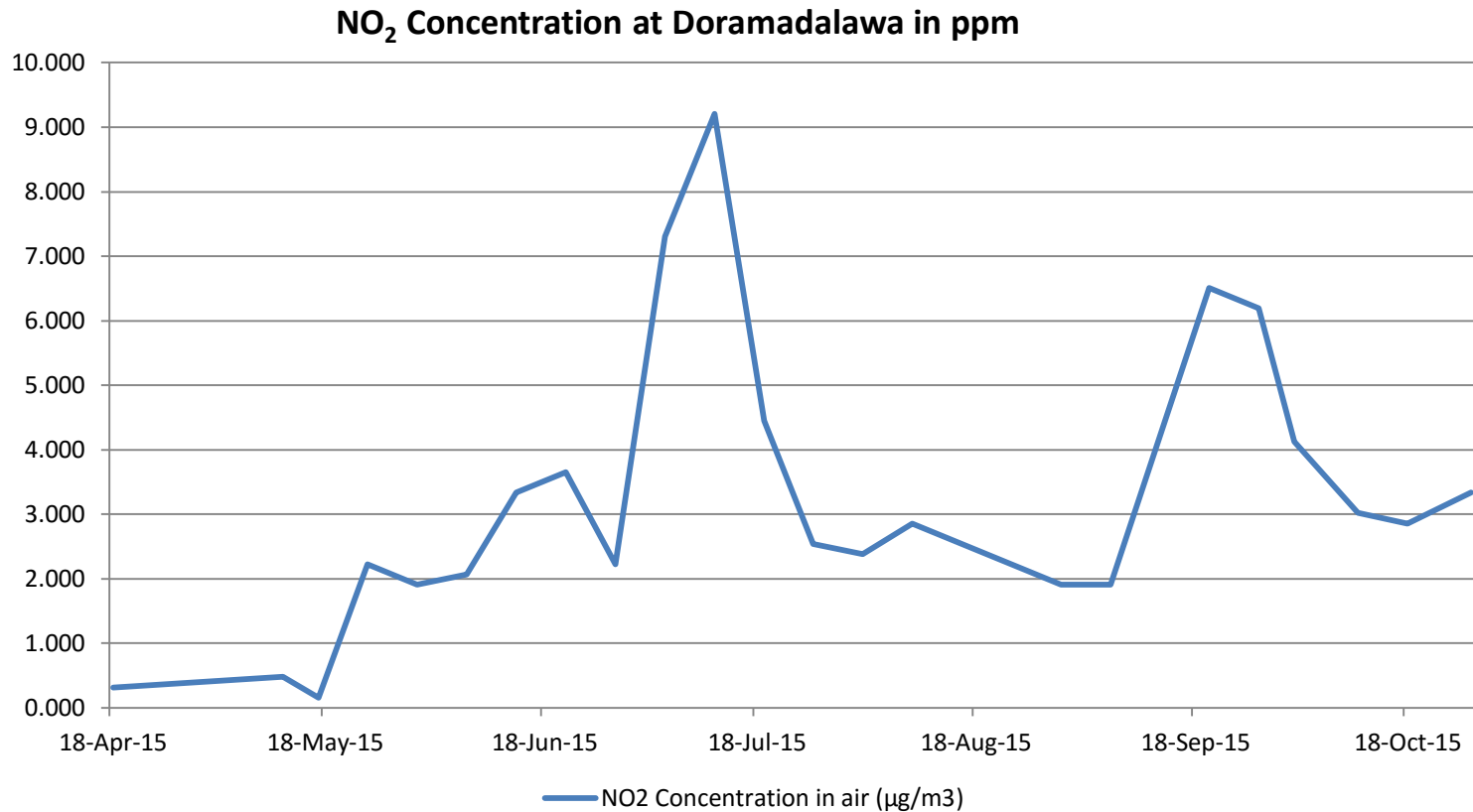
South West Direction of the site

North East Direction of the site

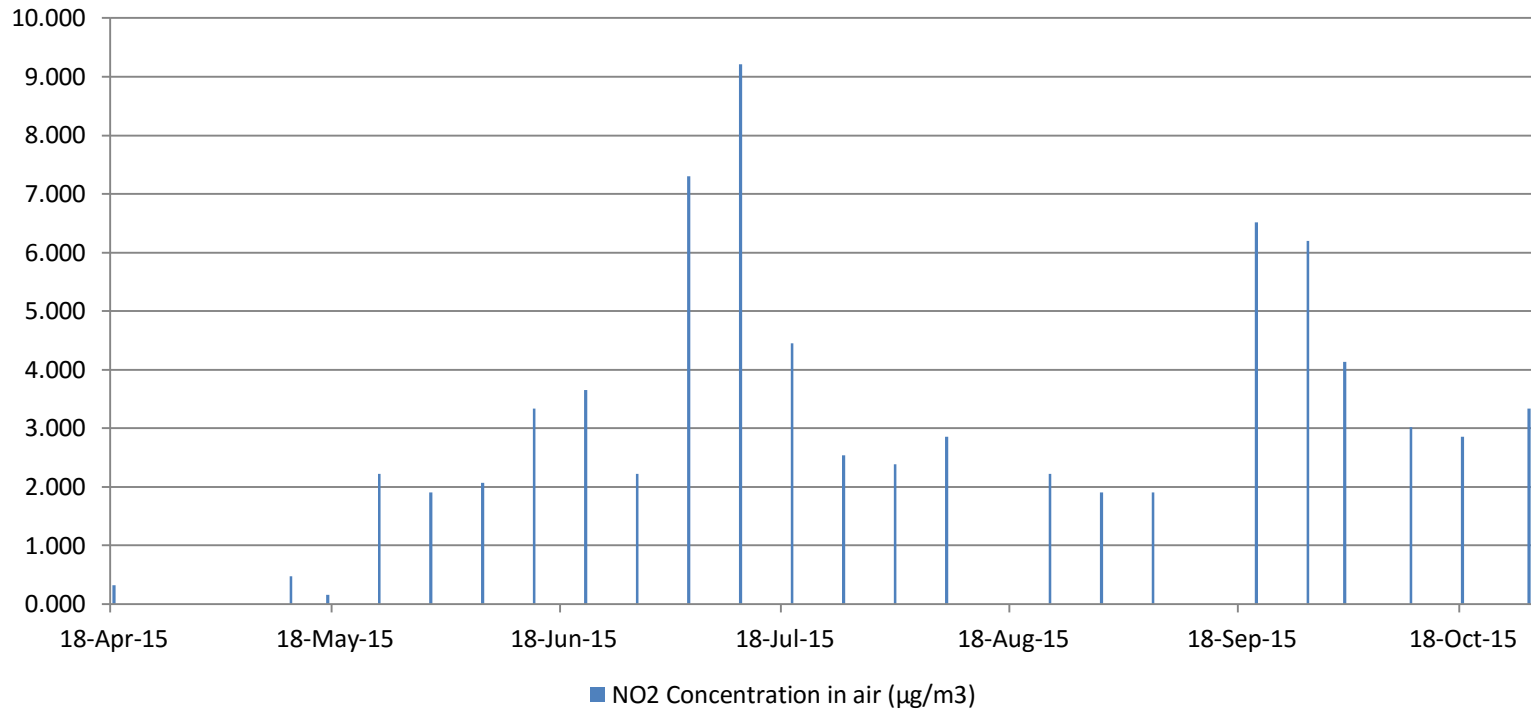
Ambient air quality monitoring activities at Doramadawala site

- Monitoring of SO₂ and NO₂ concentration was recommenced effect with April, 2015 using wet chemical method
- Samples are collected and analyzed by central laboratory, CEA
- Ground level ozone is not measuring currently

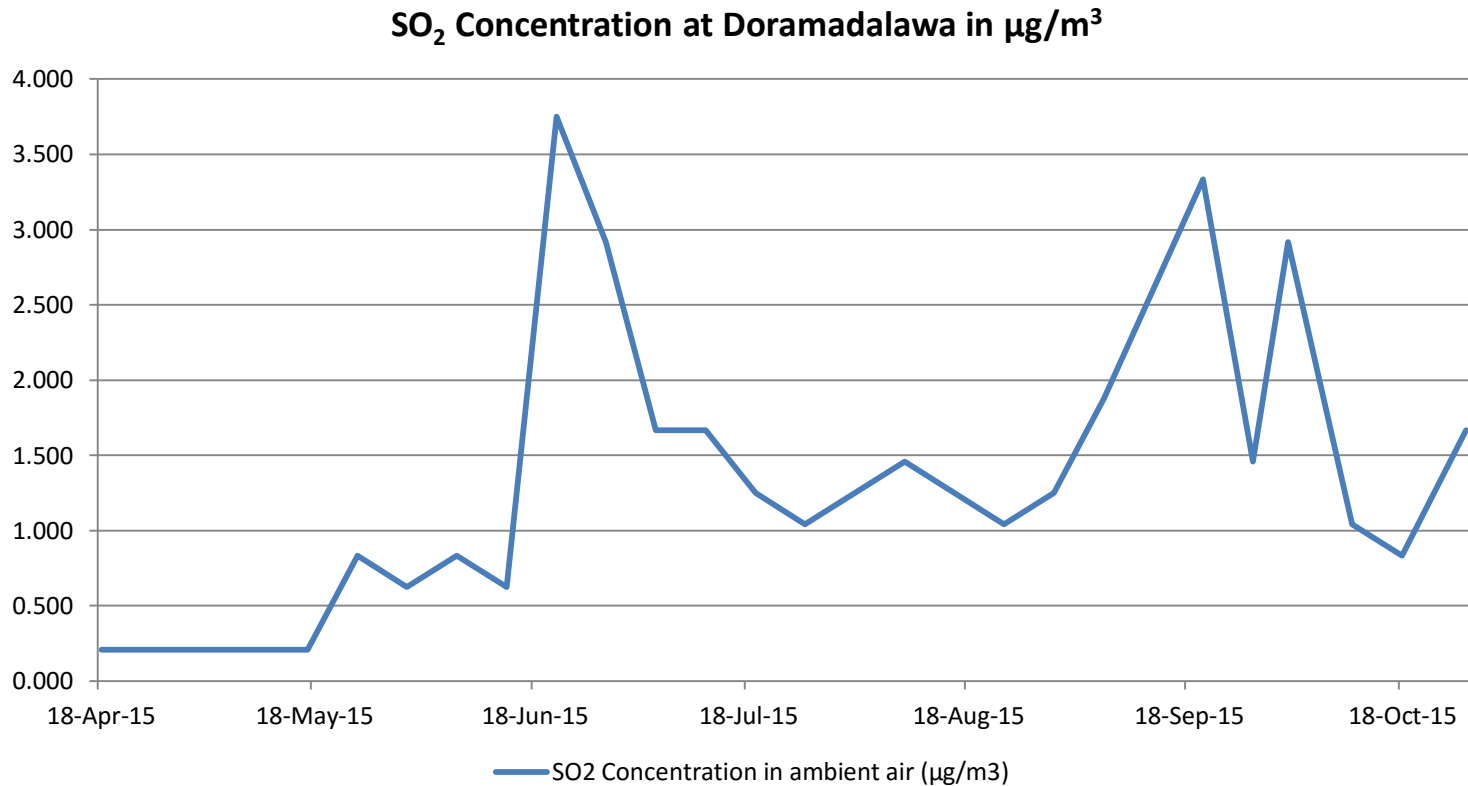
NO₂ Concentration at Doramadalawa Site from App to Oct 2015



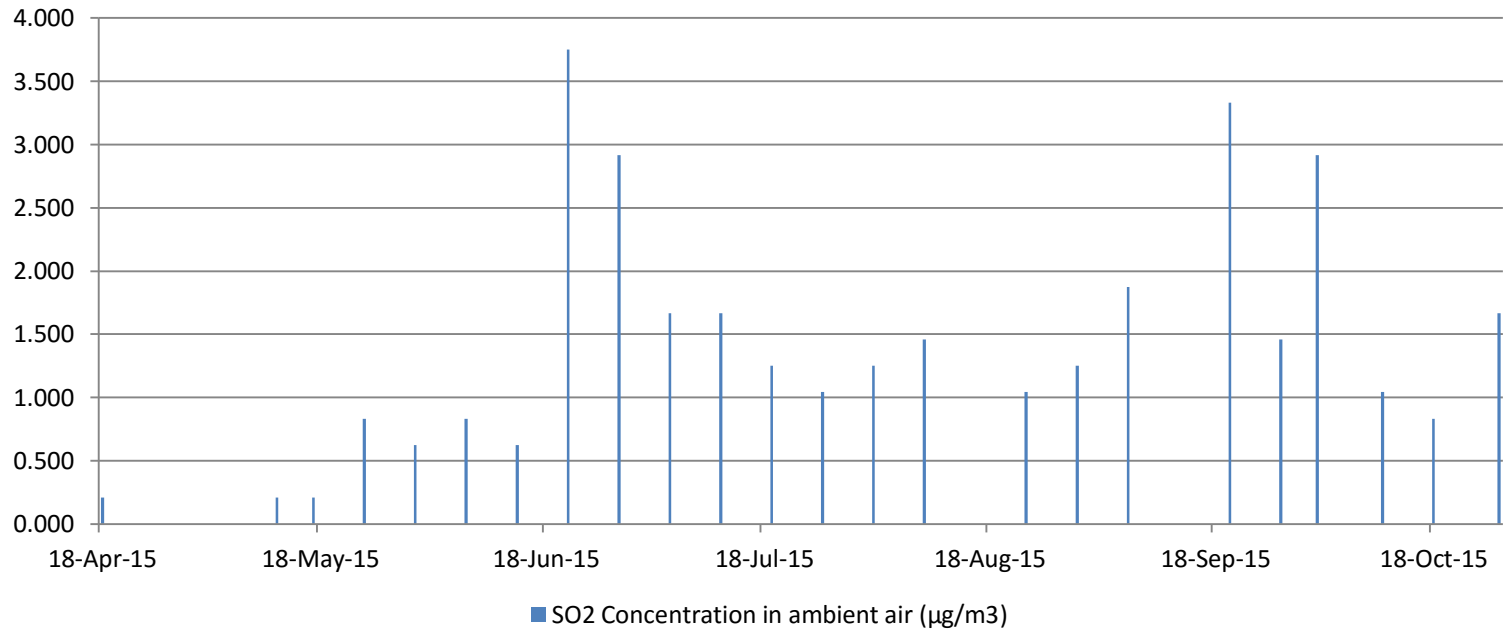
NO₂ Concentration at Doramadala in ppm



SO₂ Concentration at Doramadalawa Site from April to Oct 2015



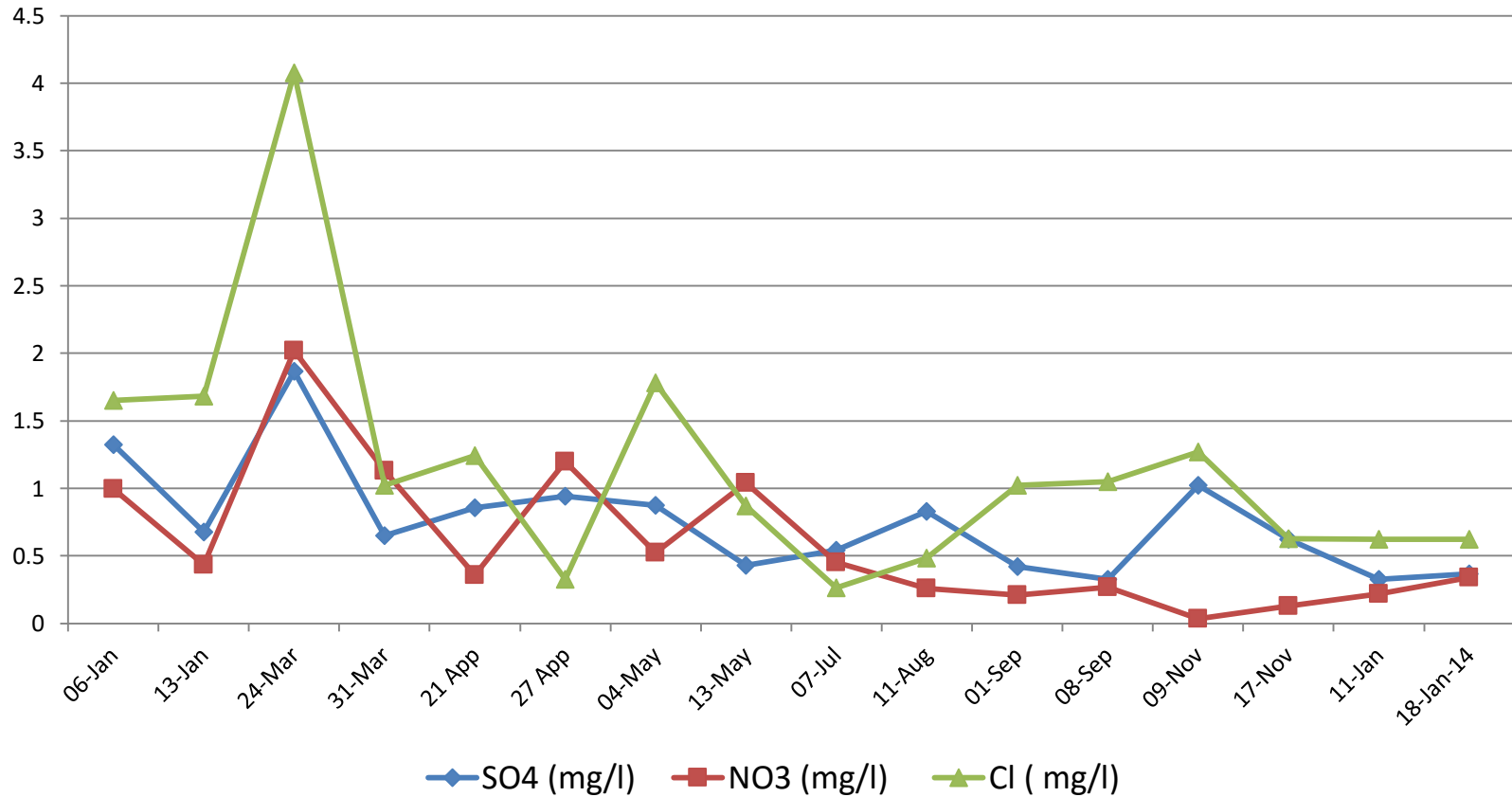
SO₂ Concentration at Doramadalawa in µg/m³ from App to Oct 2015



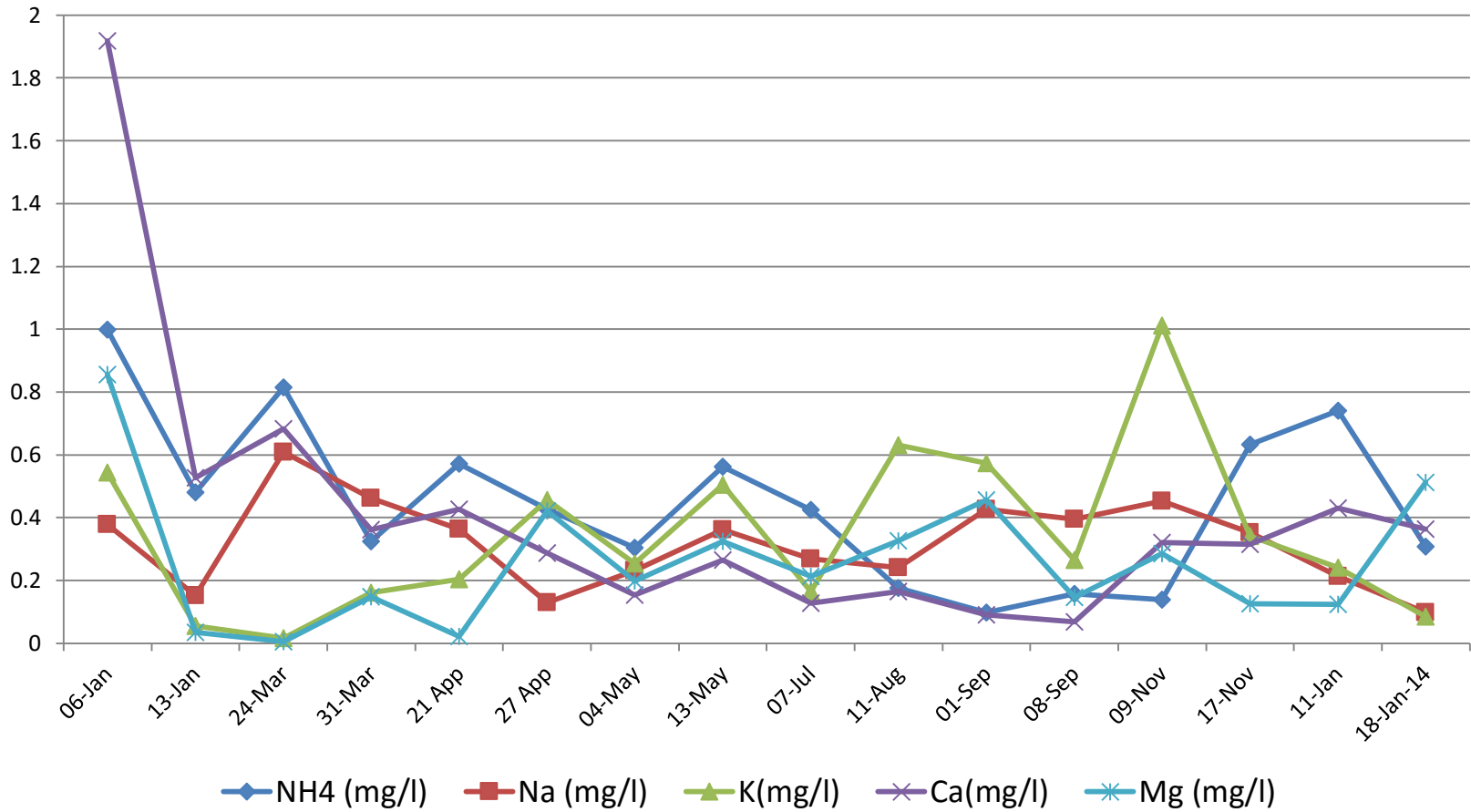
WET DEPOSITION MONITORING

- Wet deposition monitoring is not being carried out presently due to instrument failures
- It is not practice to repair instruments locally
- Monitoring and analyzing samples could be commence, once instruments are obtained

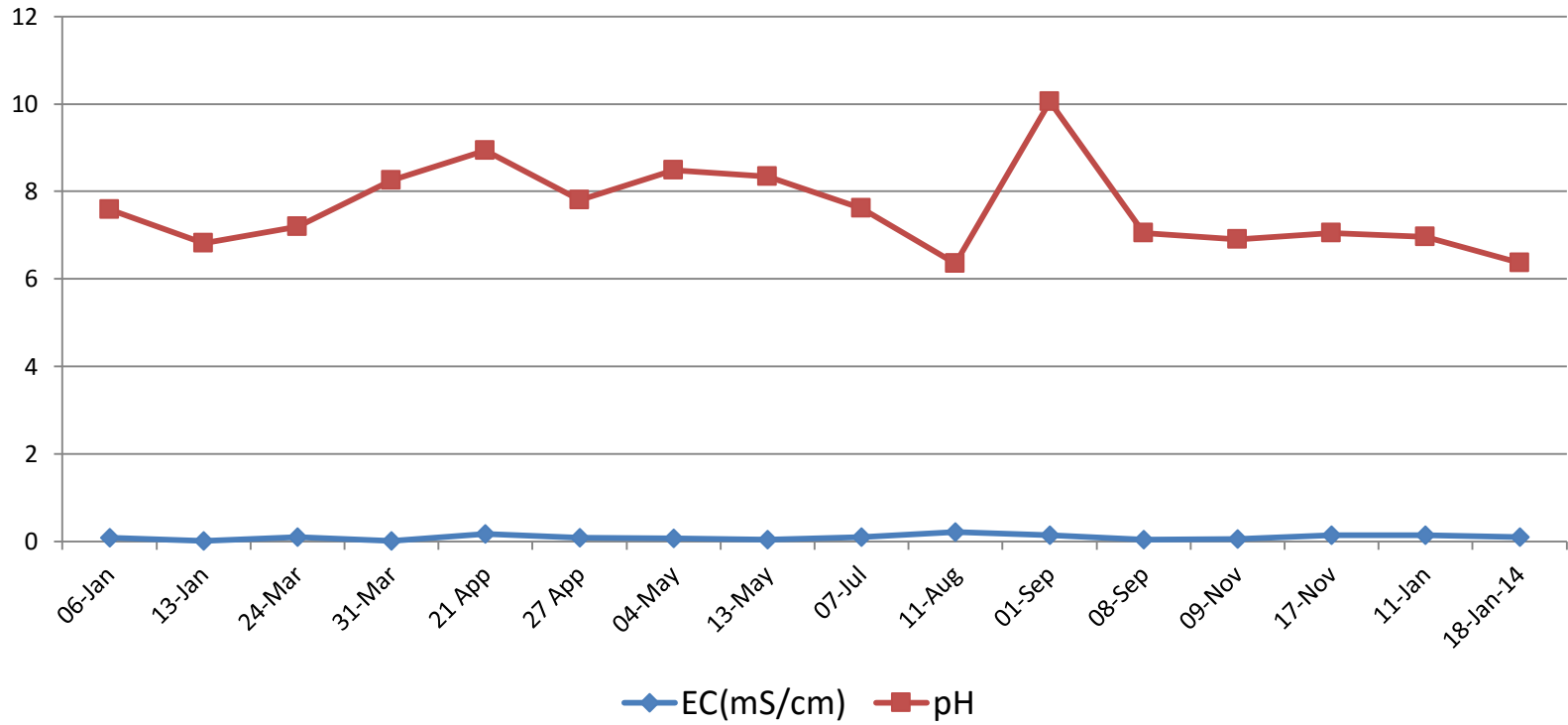
Concentration of Anions from Jan 2013 to Jan 2014



Concentration of Cations from Jan 2013 to Jan 2014

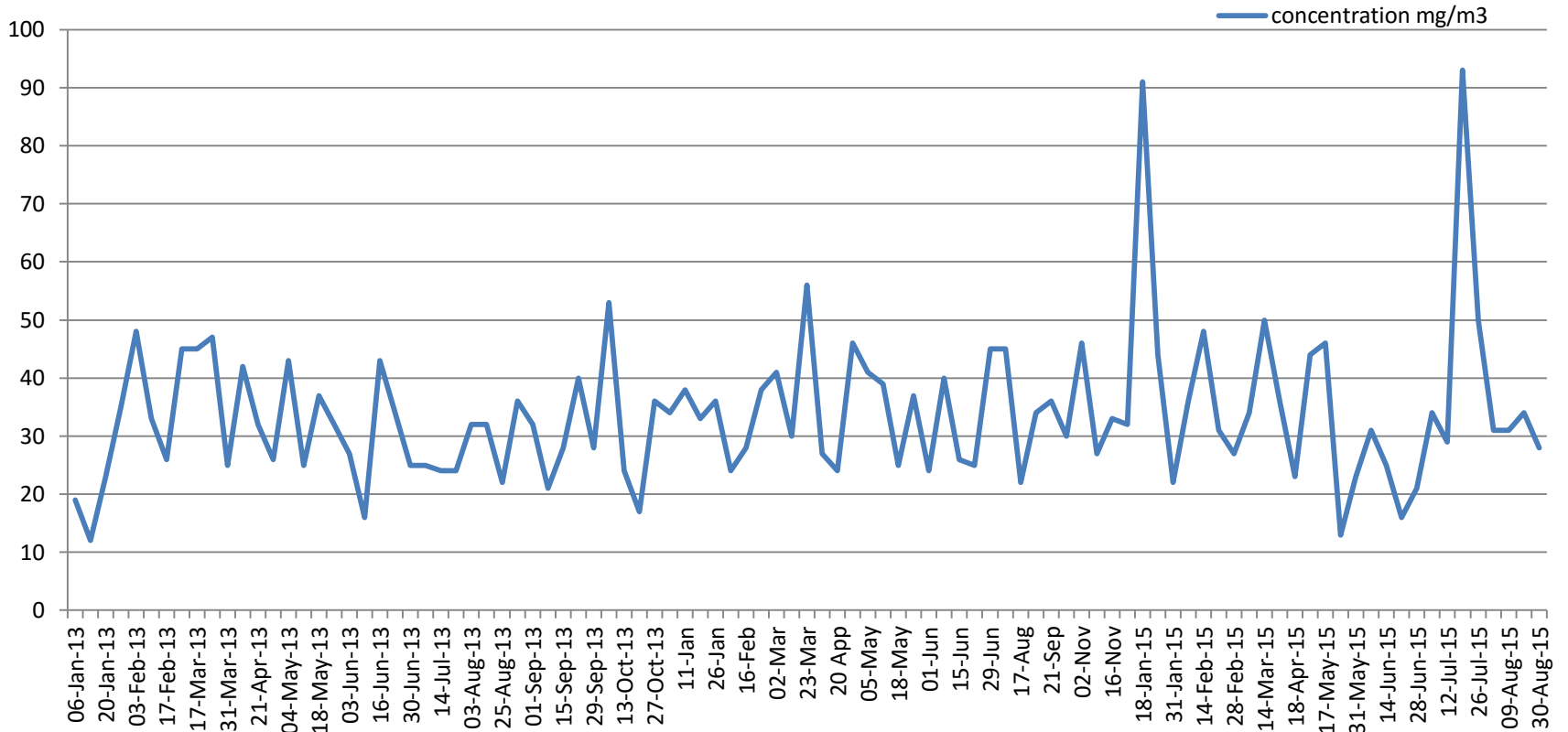


EC and pH from Jan 2013 to Jan 2014



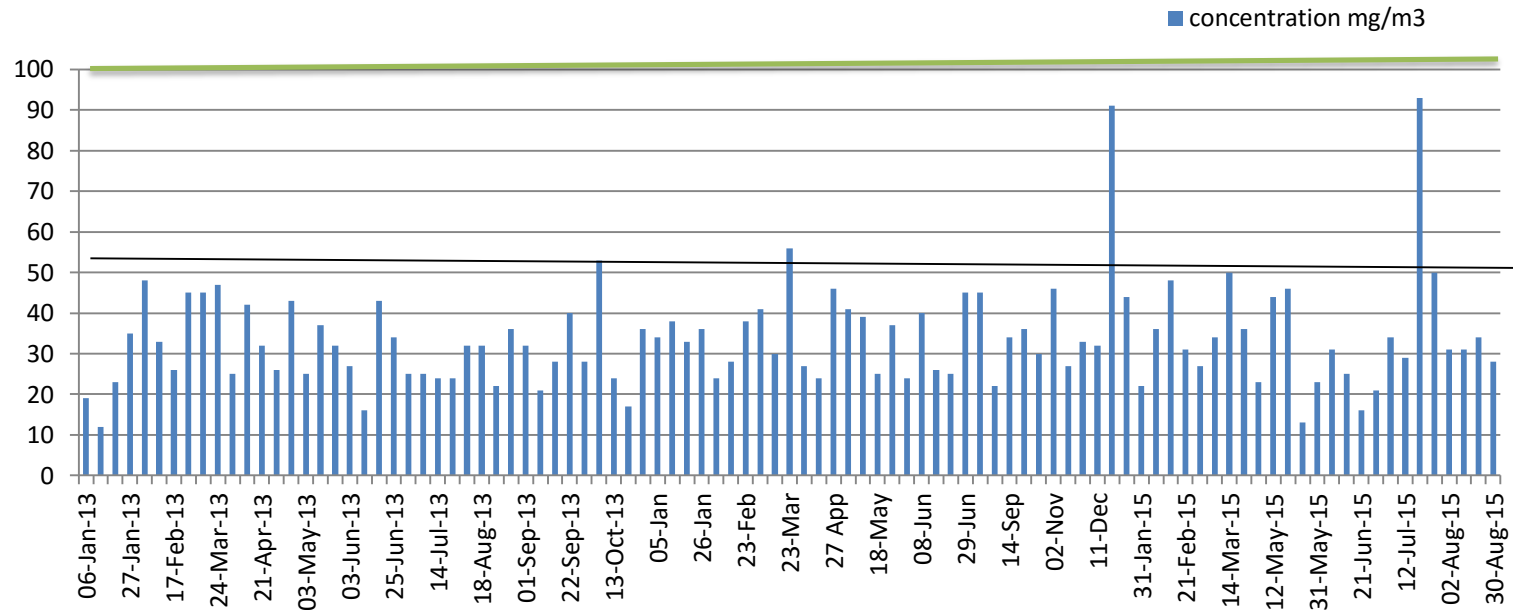
PM₁₀ concentration in mg/m³ :from Jan 2013 to Aug 2015

PM₁₀ Concentration at Doramadala site –Jan 2013 to Aug 2015 (mg/m³)



PM₁₀ Excedences during Jan 2013 to Aug 2015 with reference to National Standard

PM₁₀ Concentration at Doramadalawa site –Jan 2013 to Aug 2015 (mg/m³)



Annual average : 50mg/m³

24 hr average: 100 mg/m³

Status of Impact Assessment

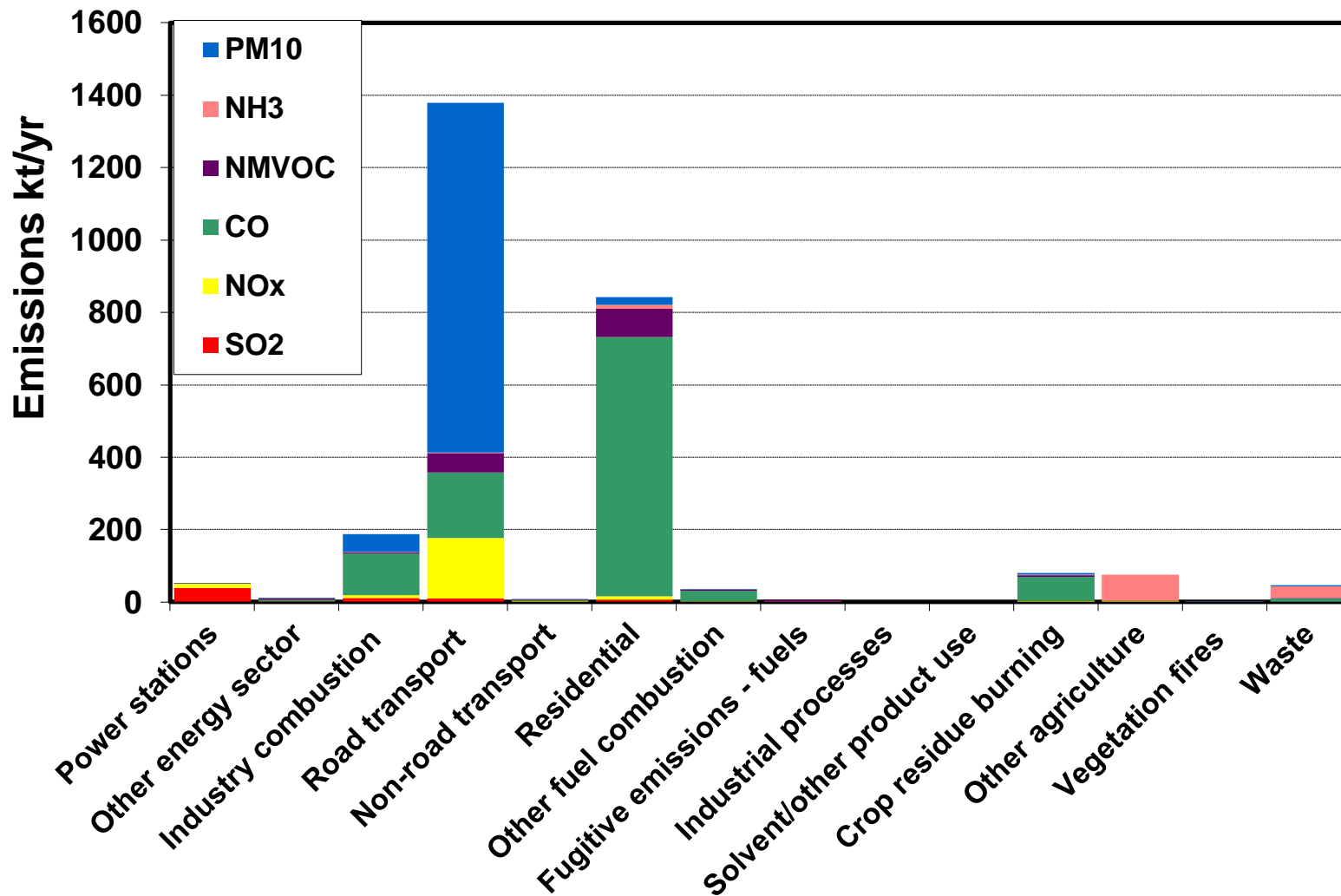
- Assessment was interrupted due to demise of the researcher appointed by Rajarata university
- Re-planning to carrying out the impact assessment activity
 - ✓ Rajarata University appointed a new researcher to continue the activity
 - ✓ University informed that (Ethylene diurea) EDU is not available to continue the research
 - ✓ The CEA requested form RRC.AP to see the possibility of providing EDU

Emission Inventory 2010 - Sri Lanka

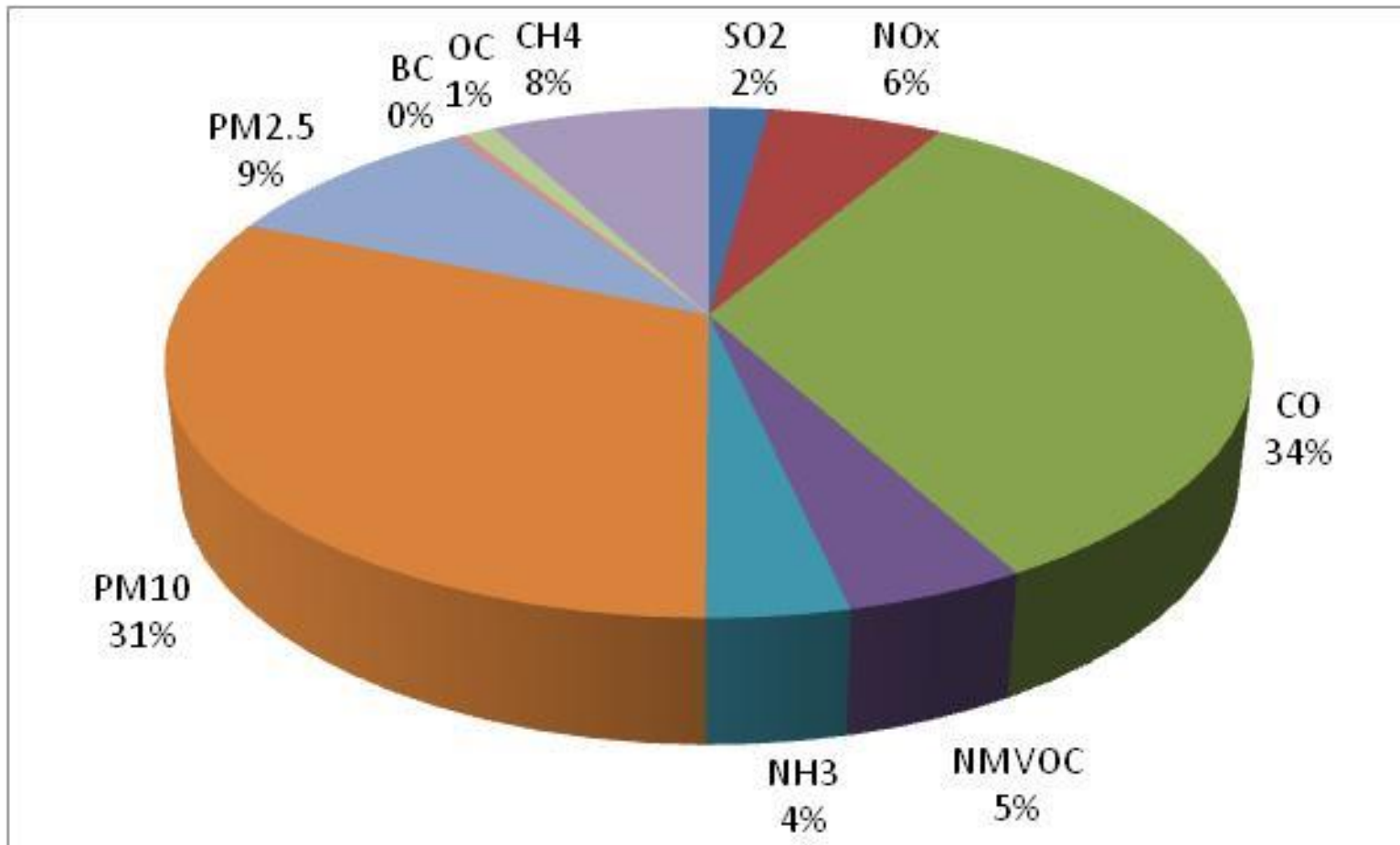
- Emission inventory for 2010 is completed
- Data gaps were filled compared to 2000 and 2005
- Initiatives have been taken to complete emission inventory for year 2012 and collecting data for the preparation of emission inventory for year 2012 has been commenced

Emission Inventory -2010

Total emissions

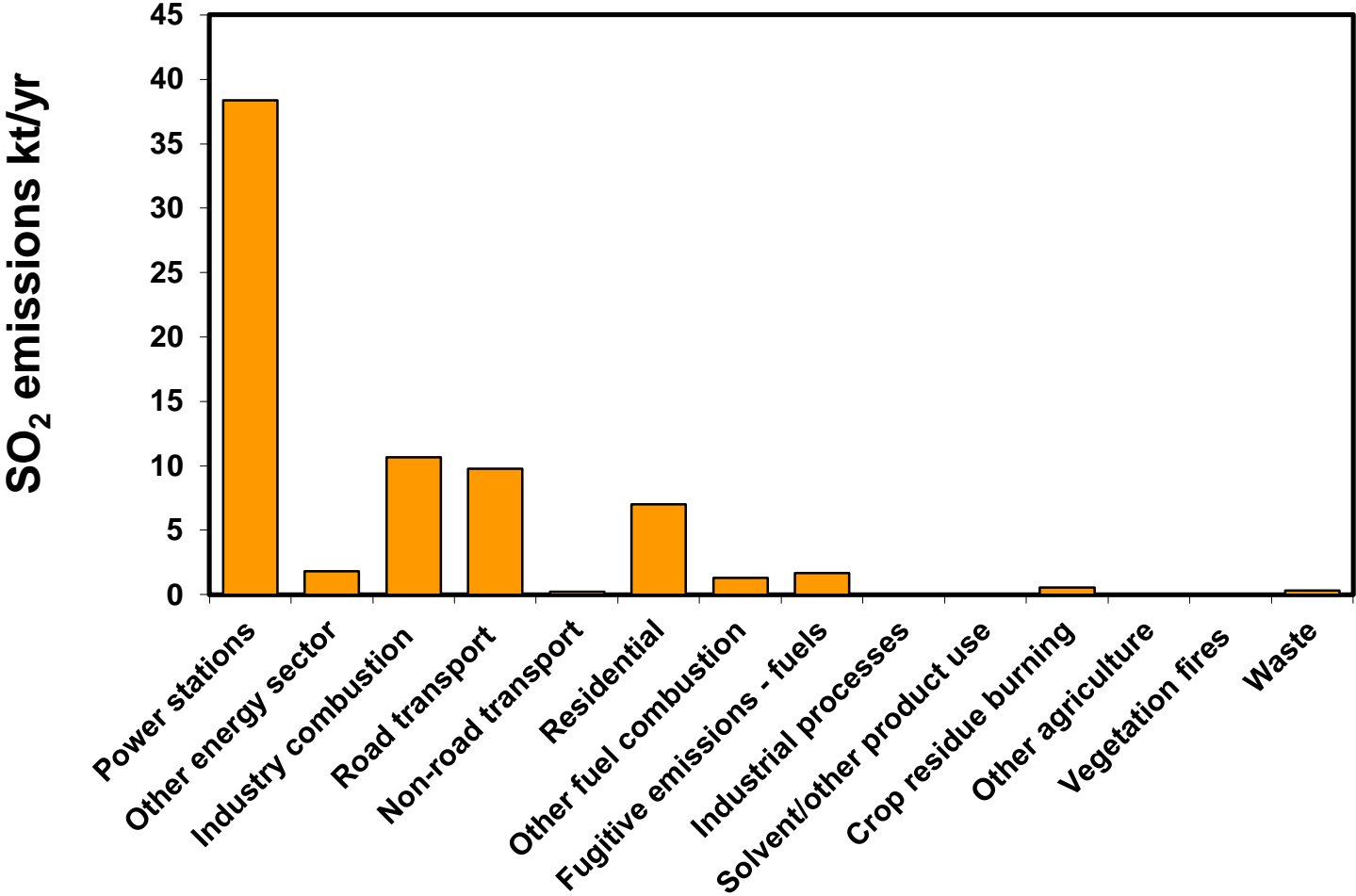


Emission Inventory Results for 2010

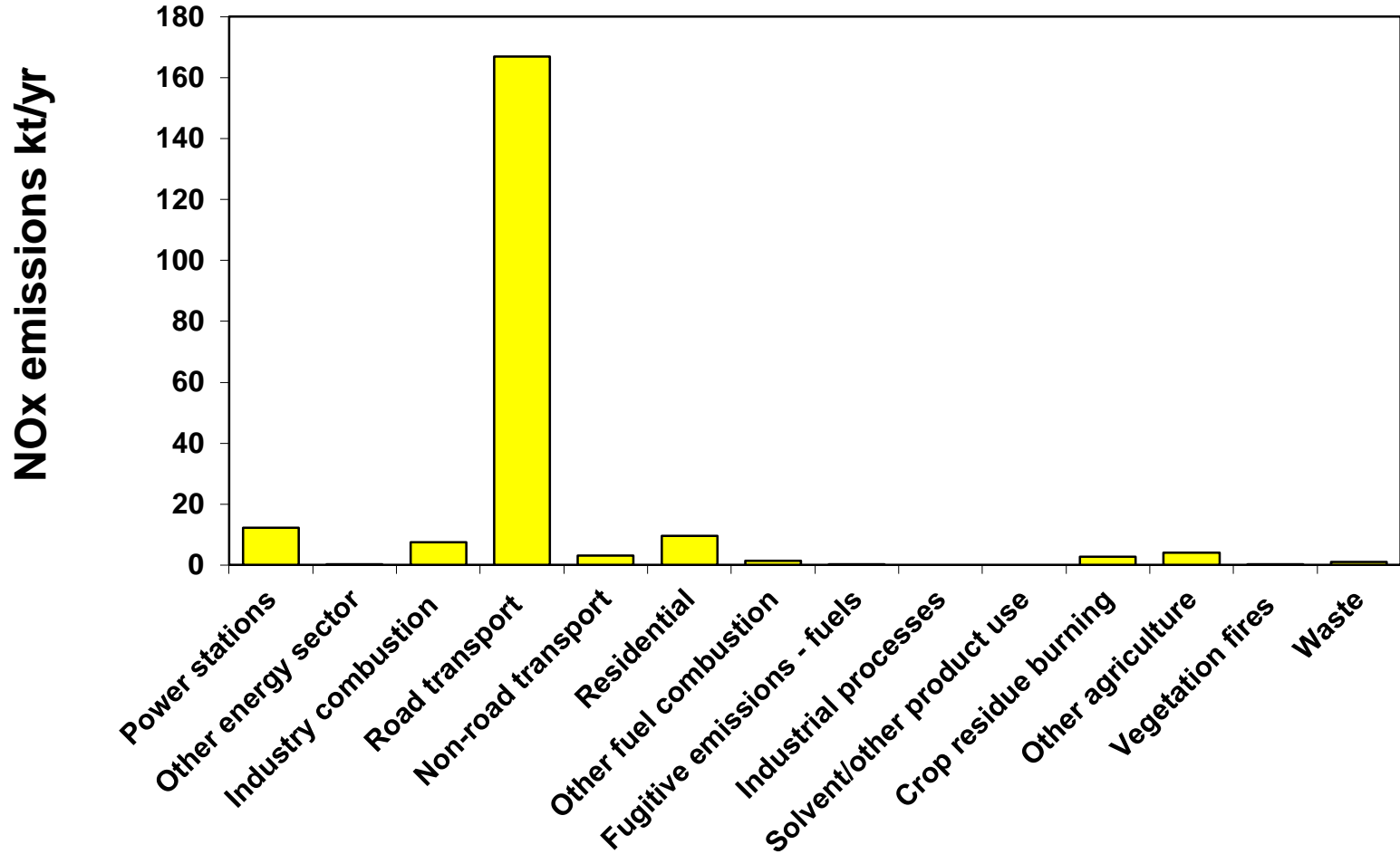


Total 3347 kt/yr

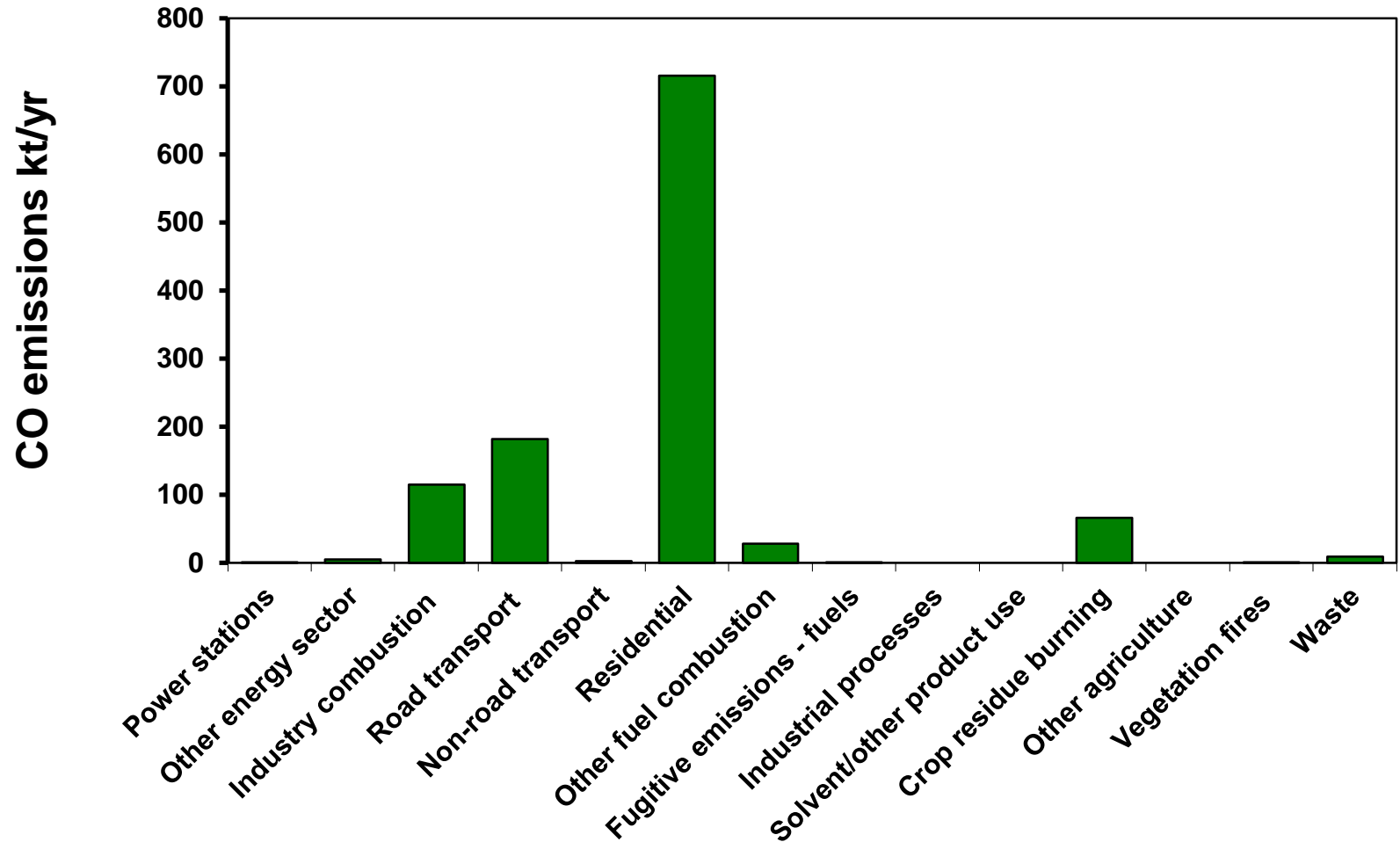
SO₂ Emissions



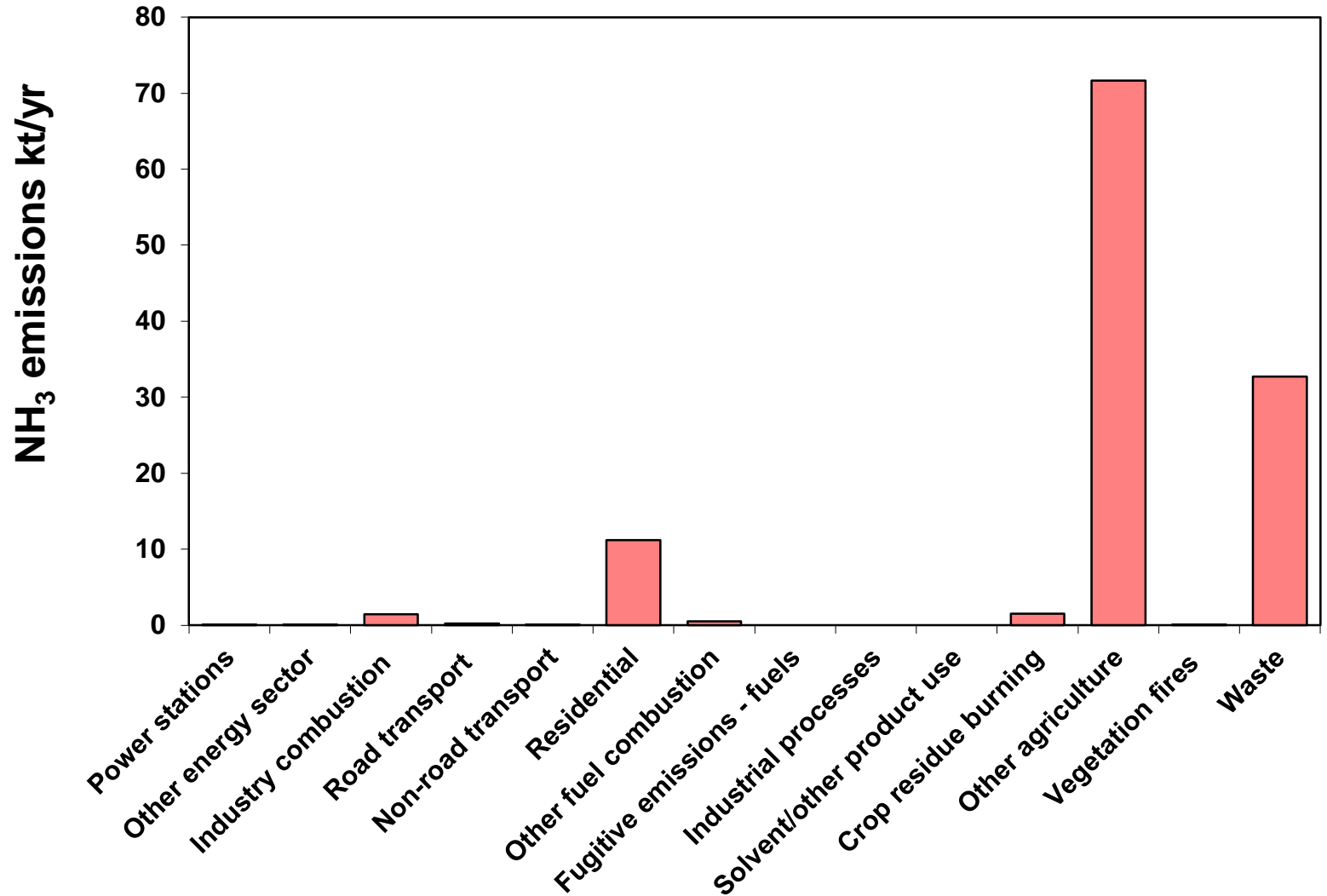
NOx Emissions



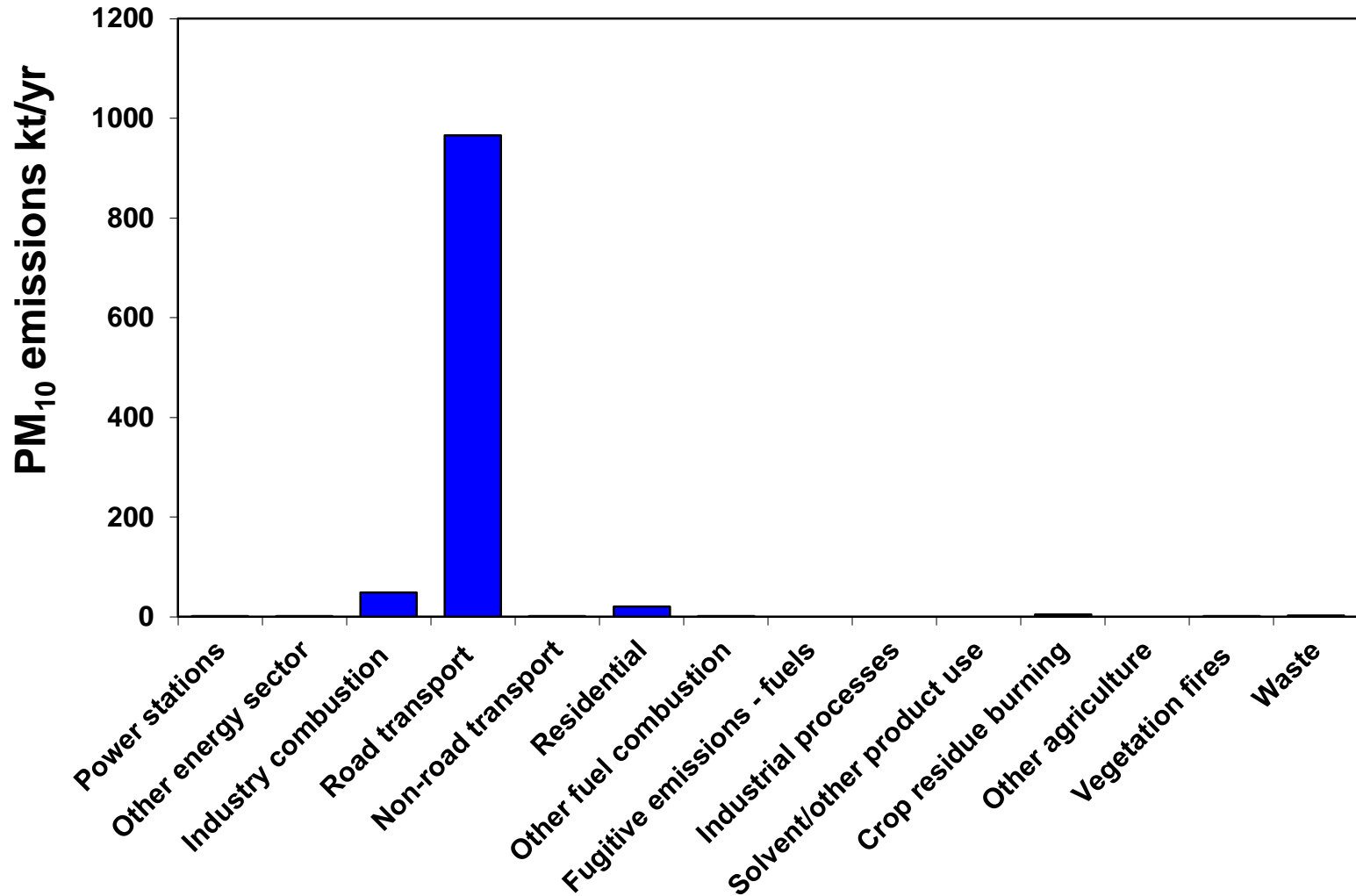
CO Emissions



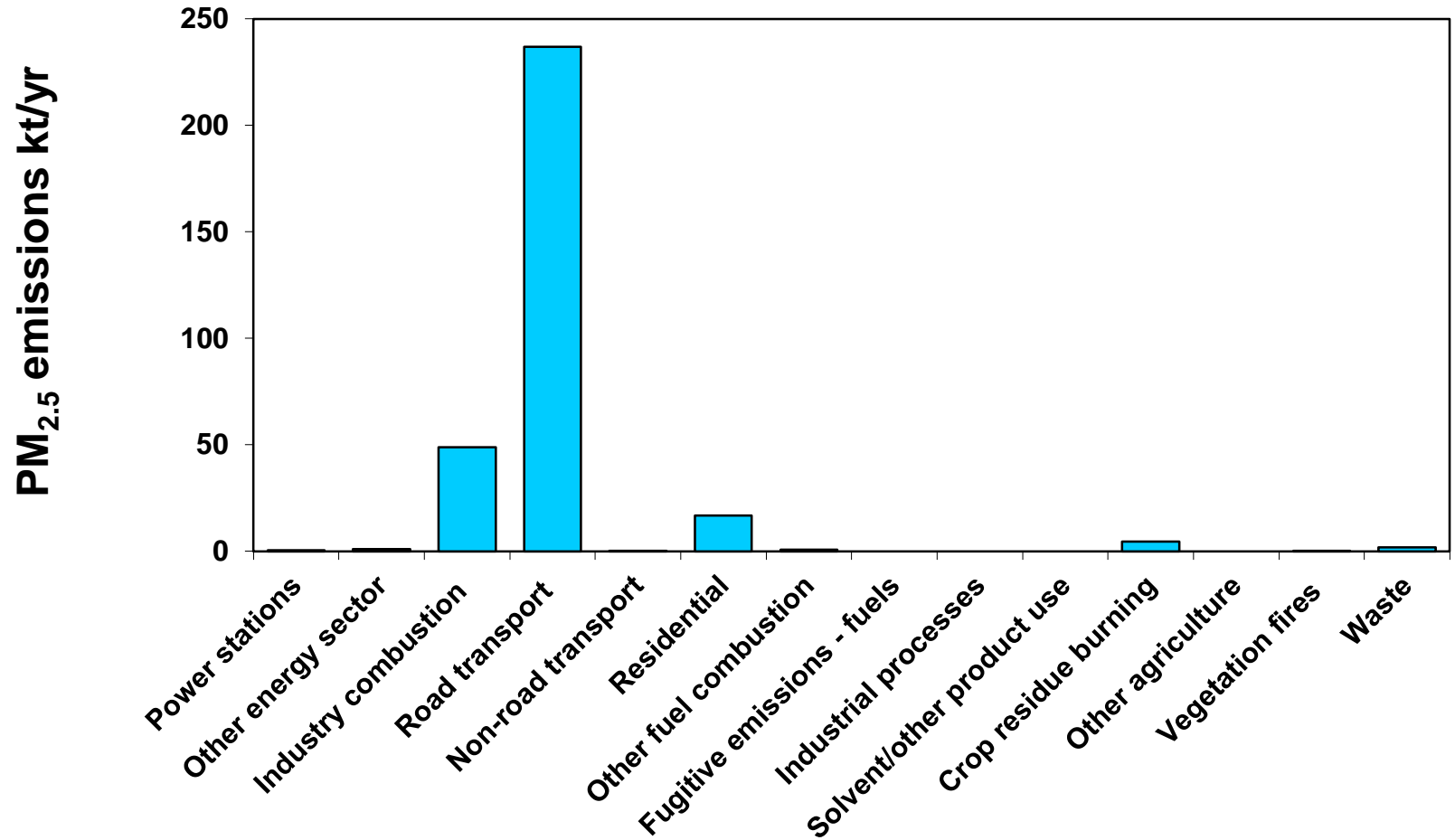
NH₃ Emissions



PM₁₀ Emissions



PM_{2.5} Emissions



Challenges for bridging data gaps

- ***Industrial data***

- ✓ *No accurate data base on industrial activities as data collection is being still processed by CEA*

- ***Data from construction activities***

- ✓ *Accurate data are not available and collecting actual data is very difficult*

- **Quality control/quality assurance**

- ✓ To develop of country specific emission factors

Updating emission inventory

- CEA has decided to prepare emission inventory for year 2012
- Initiatives have been taken to gather emission data for preparation of inventory

THANK YOU